



2

COMMITTED TO SUSTAINABLE PRODUCTIVITY

We stand by our responsibilities towards our customers,
towards the environment and the people around us.
We make performance stand the test of time.
This is what we call – Sustainable Productivity.

Mining and Rock Excavation Technique
Atlas Copco Capital Markets Day 2014

Atlas Copco

AGENDA

1. Innovation drivers
2. How do we work with innovation
3. Innovations
4. Summary



Mining and Rock Excavation Technique
Atlas Copco Capital Markets Day 2014



INNOVATION DRIVERS

Trends

Increased demand for natural resources



Increased demand for automation / fleet management and safety



Focus on energy efficiency and carbon footprint



Growth in emerging markets' middle segment



A growing demand for competent labor

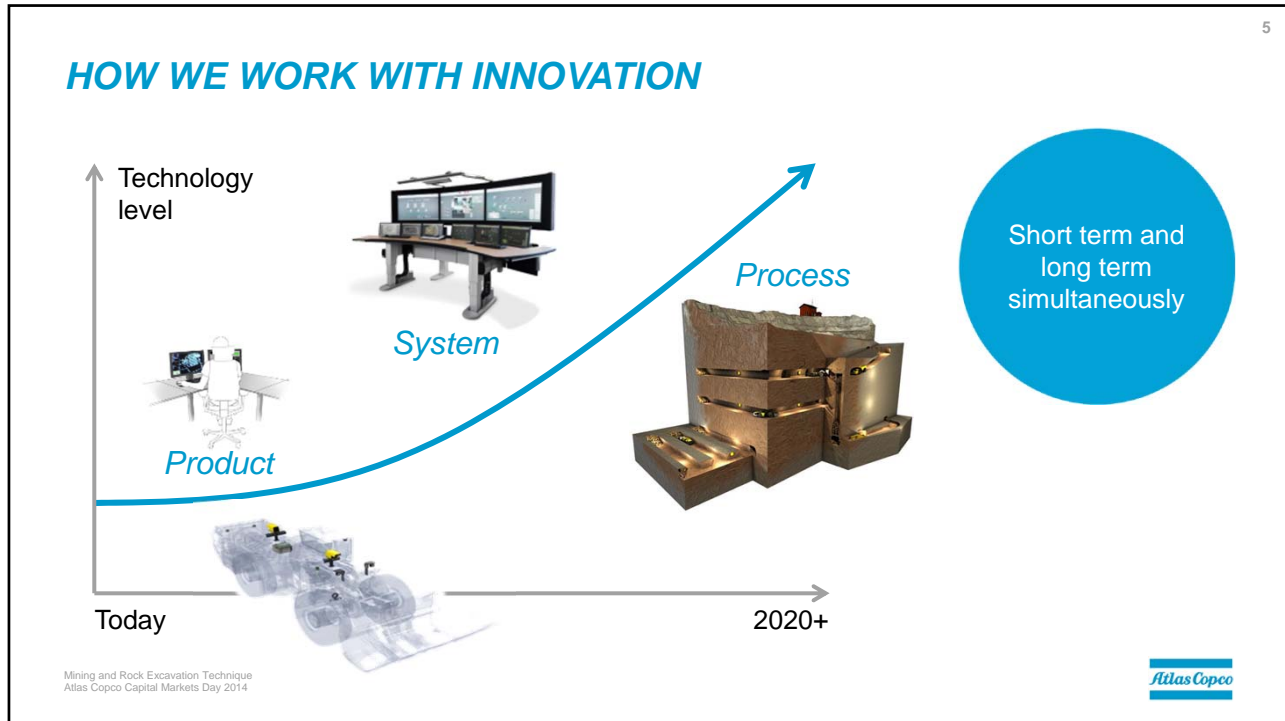


Quicker communication and availability of information



Mining and Rock Excavation Technique
Atlas Copco Capital Markets Day 2014

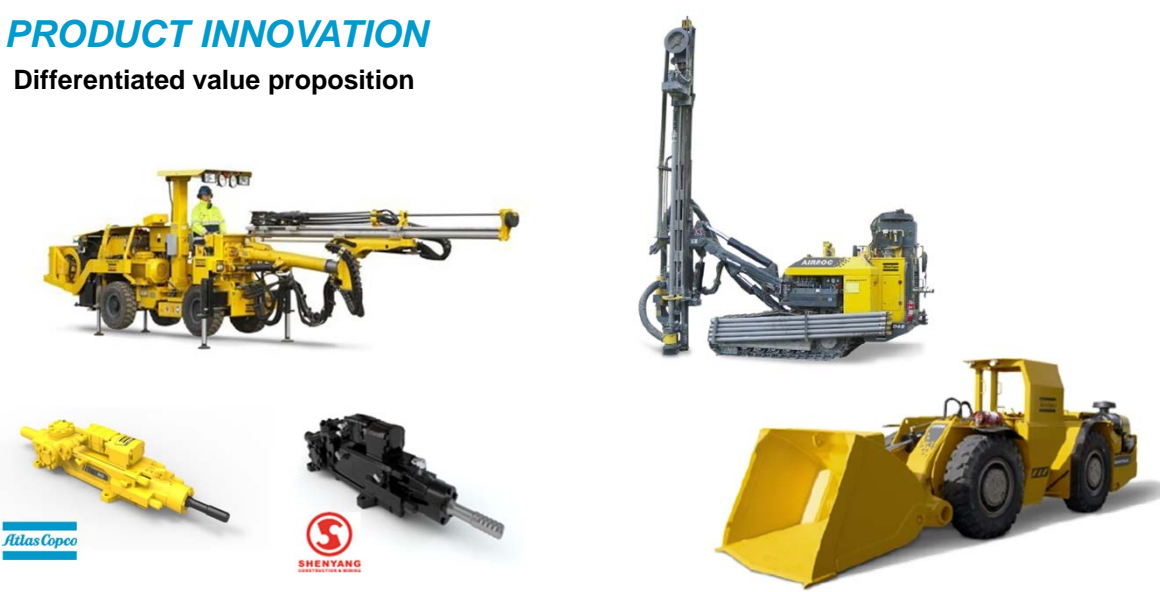




7

PRODUCT INNOVATION

Differentiated value proposition



Mining and Rock Excavation Technique
Atlas Copco Capital Markets Day 2014

Atlas Copco

8

SERVICE INNOVATION



Training
Rig Scan
Service packaging

Mining and Rock Excavation Technique
Atlas Copco Capital Markets Day 2014

Atlas Copco

CONSUMABLES INNOVATION

9



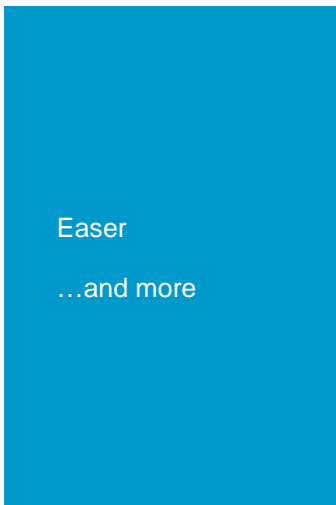
Threaded equipment
...and more

Mining and Rock Excavation Technique
Atlas Copco Capital Markets Day 2014



MECHANIZED ROCK EXCAVATION

10



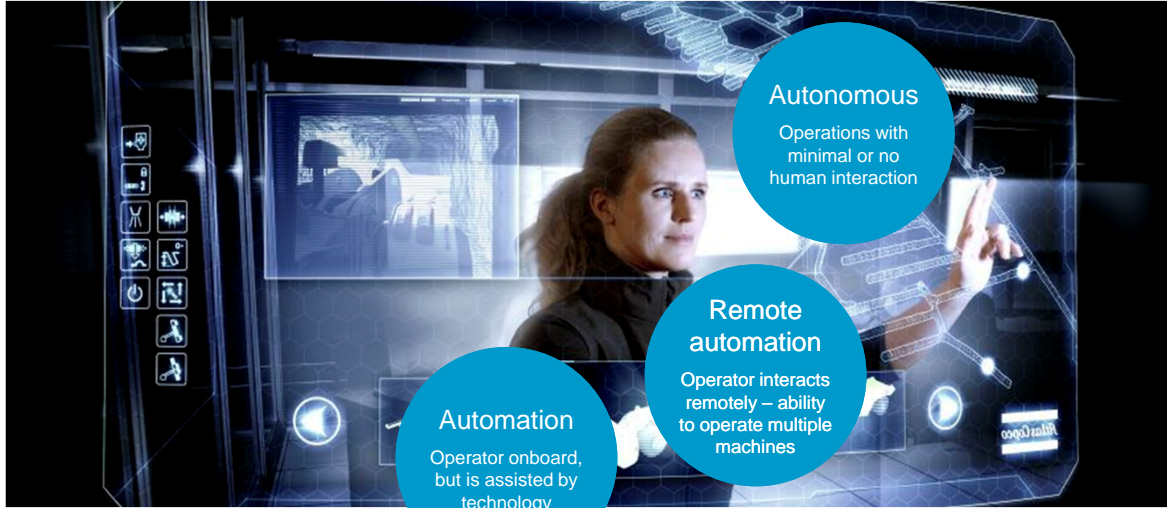
Easer
...and more



Mining and Rock Excavation Technique
Atlas Copco Capital Markets Day 2014



MINING AUTOMATION



Mining and Rock Excavation Technique
Atlas Copco Capital Markets Day 2014



AUTOMATION

Rig Control System
installed on equipment
increases productivity
and enables automation

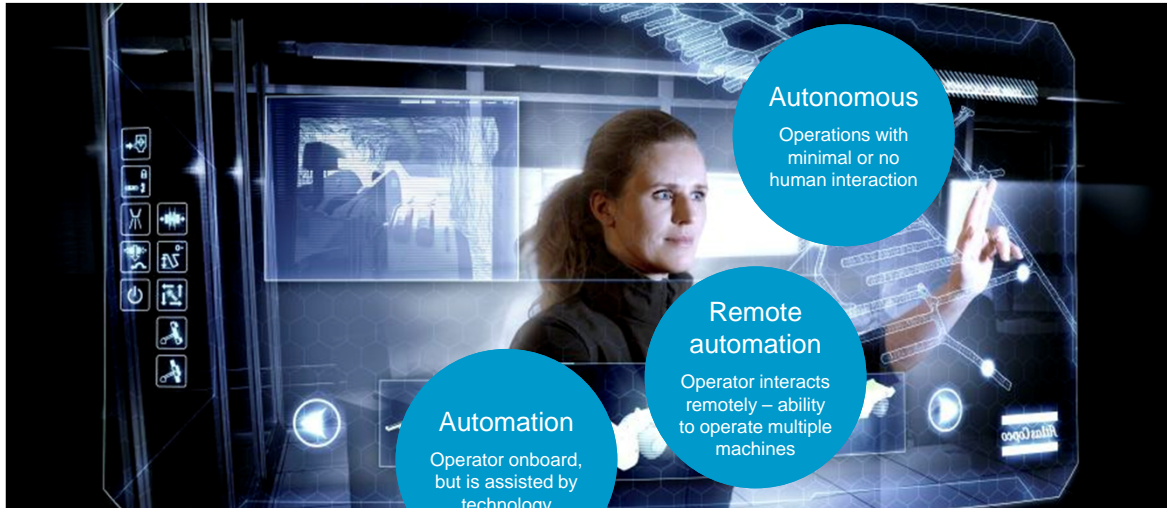
Large installed fleet



Mining and Rock Excavation Technique
Atlas Copco Capital Markets Day 2014



MINING AUTOMATION



Autonomous

Operations with minimal or no human interaction

Remote automation

Operator interacts remotely – ability to operate multiple machines

Automation

Operator onboard, but is assisted by technology

Mining and Rock Excavation Technique
Atlas Copco Capital Markets Day 2014



MULTI-MACHINE OPERATIONS



One operator can monitor and operate up to six production drill rigs

One shift per day – rigs on auto through the night

Operators sit in office

Mining and Rock Excavation Technique
Atlas Copco Capital Markets Day 2014



LOADER AUTOMATION



14 ton loader
operating in a 10 ton
loader sized drift

Control room 80 km
from the mine

Mining and Rock Excavation Technique
Atlas Copco Capital Markets Day 2014



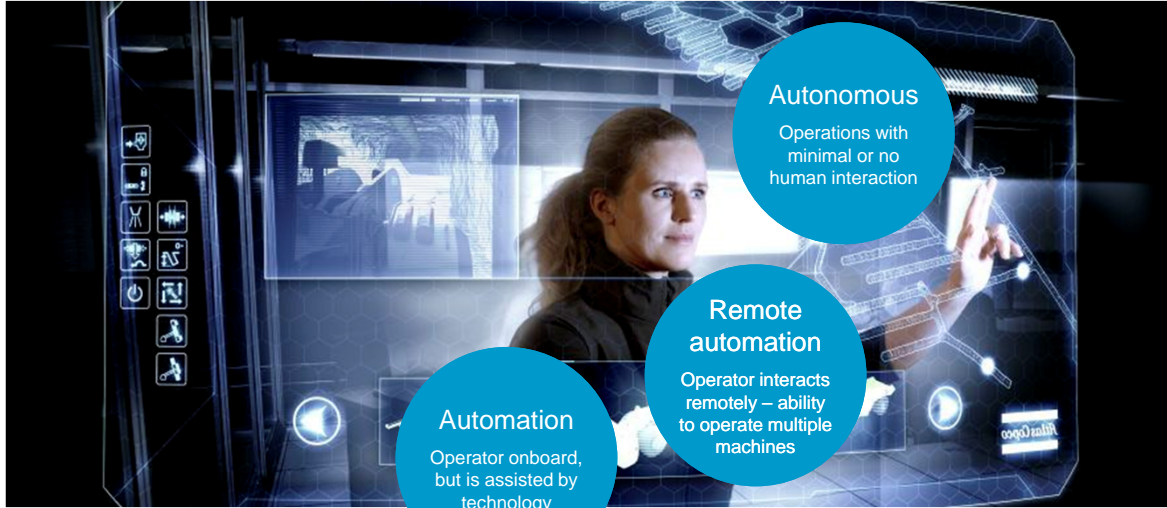
BENCH REMOTE



Mining and Rock Excavation Technique
Atlas Copco Capital Markets Day 2014



MINING AUTOMATION



Mining and Rock Excavation Technique
Atlas Copco Capital Markets Day 2014



FULLY AUTONOMOUS

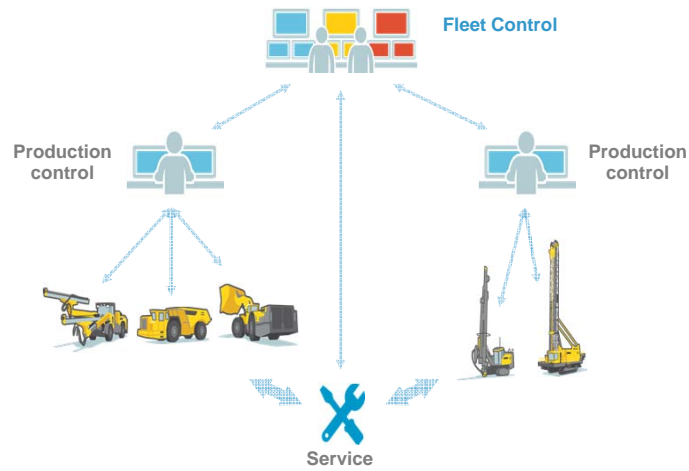


Mining and Rock Excavation Technique
Atlas Copco Capital Markets Day 2014



MINING AUTOMATION – THE FUTURE

Large installed fleet with process control and consultancy products



Mining and Rock Excavation Technique
Atlas Copco Capital Markets Day 2014



SUMMARY

- More productive and efficient equipment, services and consumables
- Mechanization and automation
- Efficiency and time to market
- Growth opportunities



Mining and Rock Excavation Technique
Atlas Copco Capital Markets Day 2014



**COMMITTED TO
SUSTAINABLE PRODUCTIVITY.**

Mining and Rock Excavation Technique
Atlas Copco Capital Markets Day 2014

